

# guarantee

**airRoxy**  
airRoxy sp. z o.o.  
ul. Graniczna 40  
44-178 Przysowice  
tel.: +48 32 239 42 00  
fax: +48 32 230 53 77  
e-mail: office@airRoxy.com  
www.airRoxy.com

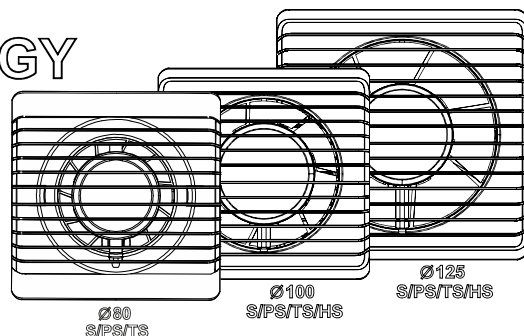
GB

## PLANET ENERGY

Manual guide



download  
your manual



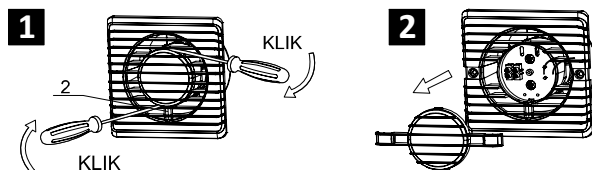
### Dear Customer!

Fans are used to force air exchange at the installation site. Thank you for choosing our product. We are sure that it will fulfil all your expectations. We wish you satisfaction from your choice of the fan and its usage.

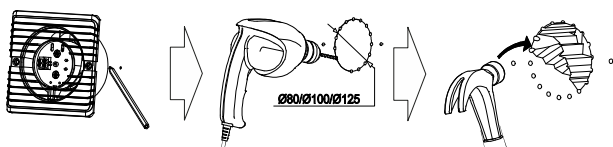
### Attention!

Cut off the power supply in the electrical installation before the connection.

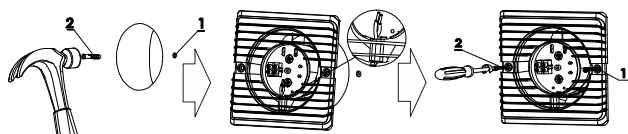
### Grill disassembly



### Mounting hole preparation



### Fan installation



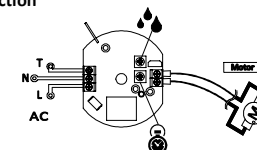
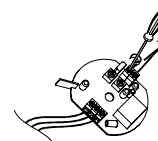
It is possible to set the fan operating time on potentiometer by using a screwdriver in fans with electrical control system (TS, HS version).

**TS** **Timer Sensor** (The fan operates work 3 to 23 minutes +/- 10% aftes switching off the light)

**HS+TS** **Higro Sensor** (The fan dries the room depending on chosen humidity level from 40%to 80%. Moisture sensor tolerance ± 20%)

### Electrical connection

**TS/HS**



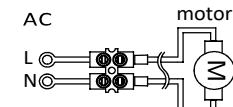
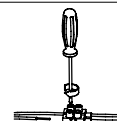
**HS**

40-80 %

**TS**

3-23 min

**S**



### Grill assembly



### Maintenance and ceaning

Each fan should be cleaned regularly and at least once a year it should be disassembled in order to survey the motor and clean the fan from the accumulated dust. The survey includes cleaning, external inspection of the motor, start-up and protective device.

1. Cut off the power supply before cleaning the fan.
2. Use soap and damp cloth or sponge to clean the plastic parts.
3. After the cleaning process make sure that all the soap remains has been removed and the inside of the motor is free from liquids.
4. Before reassembling the fan, make sure that all components are dried out.

### Attention!

It is prohibited to dispose of used equipment together with other waste. The crossed-out wheeled bin symbol indicates that electrical and electronic equipment, at the end of its service life, must not be disposed of together with other household waste. This symbol also means that products must be separately collected when disposed of. This device is made of materials and components that are suitable for reuse. The user is obliged to return used equipment to authorized electronic waste collection points. Operators of such collection points, including local collection centers, shops, and municipal units, form an appropriate system enabling the return of this equipment. Additional information about recycling the device can be obtained from the local city office, municipal waste management company, or the store where it was purchased. Proper disposal of used equipment helps prevent harmful effects on human health and the natural environment resulting from the possible presence of hazardous components. Households play an important role in contributing to reuse and recovery, including recycling, of used equipment; at this stage, attitudes are shaped that affect the preservation of the common good, which is a clean natural environment. Households are also among the largest users of small equipment, and rational management at this stage contributes to the recovery of secondary raw materials.



Guarantee no: \_\_\_\_\_

<31 Data wykręcia usterki>	Date of repair	Scope of repair	Signature
Model Serial number: Date of sale: Receipt number:  saliers stamp		date Service stamp	

2 year guarantee