

guarantee

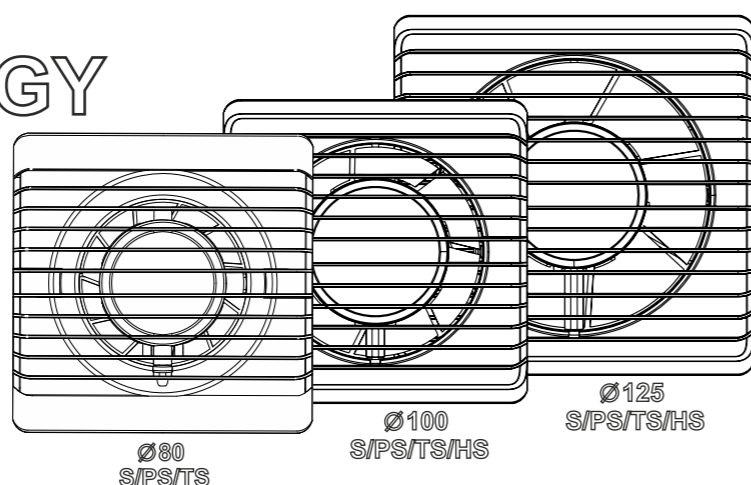
GB

PLANET ENERGY

Manual guide

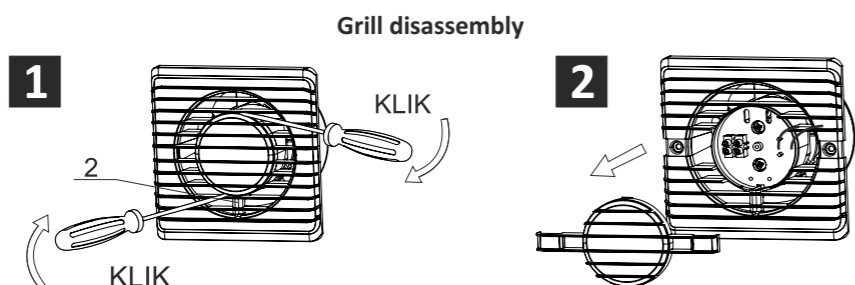


download your manual

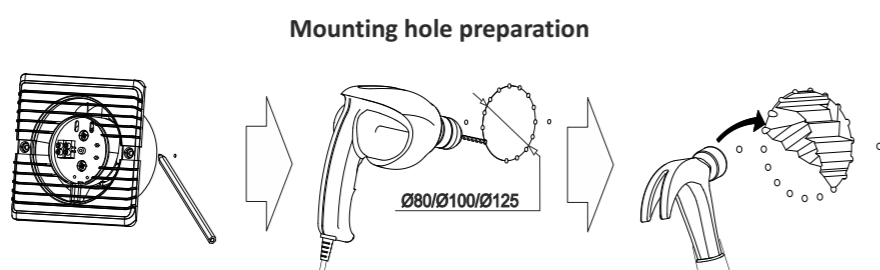


Dear Customer!
Thank you for choosing our product. We are sure that it will fulfil all your expectations. We wish you satisfaction from your choice of the fan and its usage.

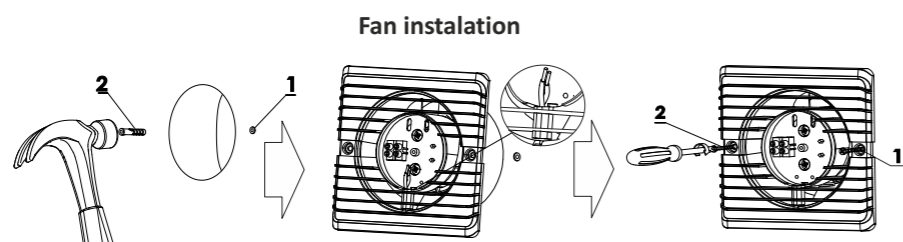
Attention!
Cut off the power supply in the electrical installation before the connection.



Grill disassembly



Mounting hole preparation



Fan installation

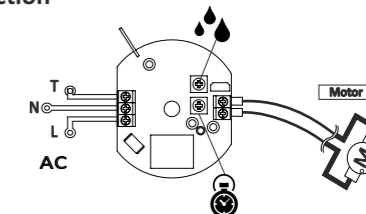
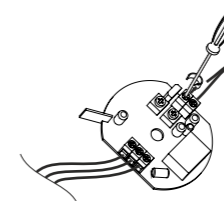
It is possible to set the fan operating time on potentiometer by using a screwdriver in fans with electrical control system (TS, HS and MS version).

TS Timer Sensor (The fan operates work 3 to 23 minutes +/- 10% aftes switching off the light)

HS+TS Higro Sensor (The fan dries the room depending on chosen humidity level from 40%to 80%. Moisture sensor tolerance ± 20%)

Electrical connection

TS/HS



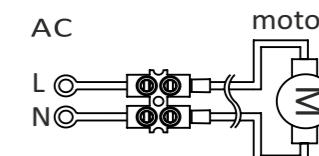
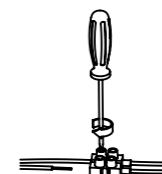
HS

40-80 %

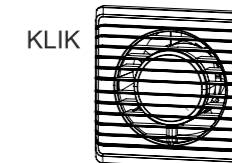
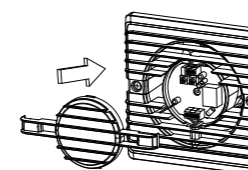
TS

3-23 min

S



Grill assembly



Maintenance and ceaning

Each fan should be cleaned regularly and at least once a year it should be disassembled in order to survey the motor and clean the fan from the accumulated dust. The survey includes cleaning, external inspection of the motor, start-up and protective device.

1. Cut off the power supply before cleaning the fan.
2. Use soap and damp cloth or sponge to clean the plastic parts.
3. After the cleaning process make sure that all the soap remains has been removed and the inside of the motor is free from liquids.
4. Before reassembling the fan, make sure that all components are dried out.

Remarks

1. All the precautions should be maintain during the installation.
2. Assembling/Disassembling should be performed by a qualified and certified electrician
3. Regulation and maintenance operations should be performed only after the previous disconnection of the fan from the power supply, even if the fan isn't working.
4. The electrical installation requires a switch with minimum 3mm distance between the contacts of all poles.
5. All the precautions should be undertaken to avoid the invers flow of gases to a room from an open chimney hole or other devices with the open fire.
6. The producer reserves the rights to introduce the innovations and alterations resulting from the technological development.

Warranty terms and conditions

The guarantee is binding for 2 years from the date of purchase after showing the receipt. Any imperfections or technical defects will be removed or the device will be replaced by a new one in the period of 21 days from date of delivery of the damaged device into the service authorities. The guarantee does not include the treatment of device which has visible defect at the moment of purchase, or if the defect results from inappropriate usage, storing and maintaining as well as mechanical damages.

Attention!

After the operating period the device should be utilised in accordance with selective disposal of electrical and electronic equipment waste



Guarantee no: _____

Date of report	Date of repair	Scope of repair	Signature

Model Serial number: Date of sale: Receipt number: sellers stamp	date Service stamp
--	------------------------------

2 year guarantee