

BioVent WC

Direct odour extraction from the toilet bowl

INSTRUCTION MANUAL / WARRANTY

Dear Sir or Madam!

Thank you for choosing our product. We guarantee that it will satisfy all your expectations. We wish you satisfaction with the purchased fan and its operation. We offer you the possibility of using the toilet without opening windows and using refreshing agents.

Our product is designed for any toilet frame where access to the inlet riser is possible.

How does the BioVent WC odour extraction system work?

There is no need to open windows or use refreshing agents. Most deodorants affect our health, causing sensitisation, irritation of the respiratory tract, allergies, skin diseases, etc. Instead, install a BioVent WC that works similarly to the odour extraction system in the kitchen. The odours from the bowl are sucked out by a very quietly running fan installed in the BioVent WC device directly connected to the ventilation chimney or outside through the wall of the building, and not spread throughout the room, then they are mixed with various deodorant chemical fragrances and refreshing agents.

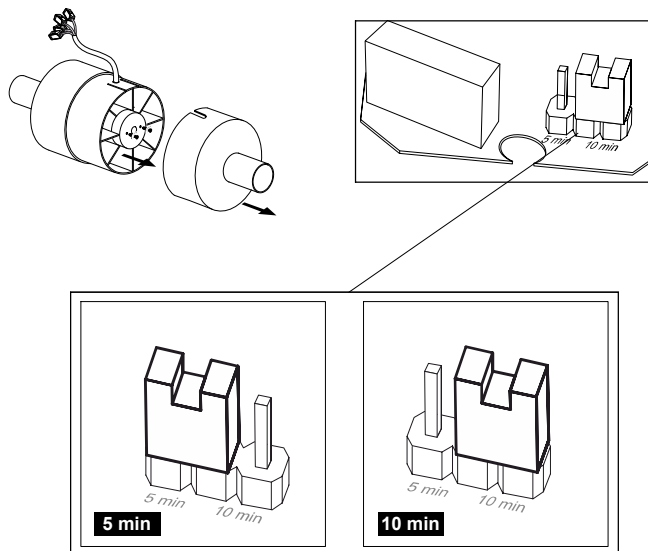
BioVent WC is activated by means of a manual attachment, the device has a two-stage operation time adjustment:

the first mode set by the manufacturer at the factory is a 5-minute timer

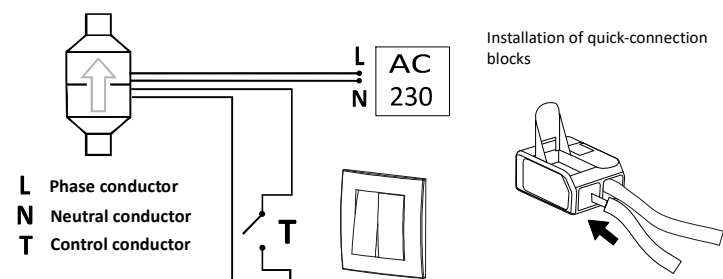
the second mode can be set by the user by reconnection of the jumper to a position with a 10-minute time switch (prior to adjustment or maintenance, always ensure that the unit is disconnected from the mains, even if the fan is not running).

The device should be mounted, disassembled, and adjusted by a qualified electrician with SEP certification.

Adjustment – jumper setting method

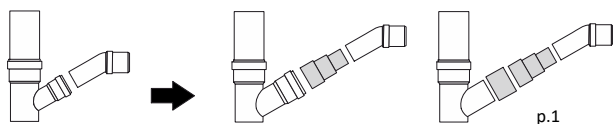


Electrical connection diagram for the BioVent device

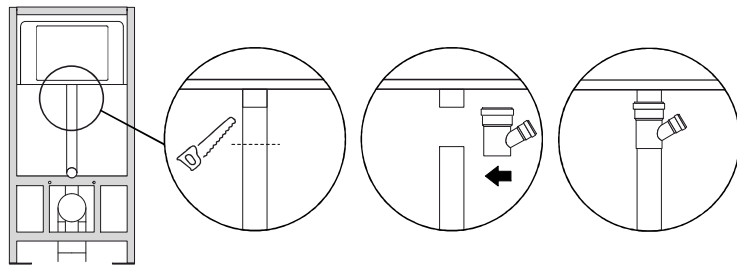


Installation works should be carried out by a qualified employee – installer of sanitary equipment!

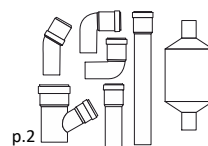
1. If the rack has an original T-piece, fit a reduction to 32 mm (depending on the type of T-piece, it may be necessary to use an additional muff to connect the elements)- then follow the drawings shown in fig.3 without fitting the T-piece.



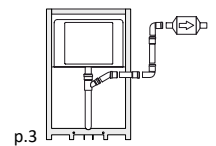
2. If the frame is not equipped with a T-piece, install the included T-piece in the inlet elbow shortening it by about 10cm. The joints of the elements should be sealed to prevent odors and moisture from getting outside.



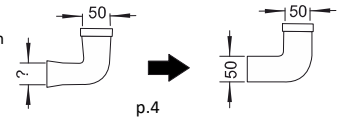
Box contents



Installation diagram of the BioVent unit in a flush-mounted rack

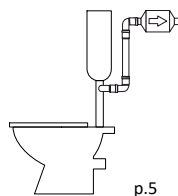


In frames where the inlet elbows taper (e.g., GROHE), you need to buy a 50mm fixed elbow and replace it with the original one, and then follow the instructions.

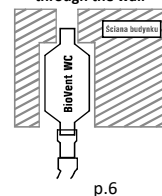


Installation of a BioVent WC unit for a compact toilet.

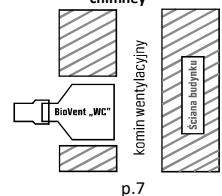
Lower flush installation



Installation outside the building/ through the wall



Installation into ventilation chimney



The "BioVent" unit is connected to the flush-mounted toilet frame and the ventilation chimney or within a wall leading outdoors by means of PVC pipes with a minimum diameter of 32 millimetres in a horizontal position at the minimum height of the water level in the tank. In newly built houses, also multi-family houses, it should be provided that the ventilation chimney is located as close as possible to the toilet bowl and that the electrical installation is provided for connecting the device. When installing the BioVent WC device into the building wall, install the unit housing in such a way that it can be inserted freely into the opening. In addition, it is necessary to provide for the possibility of accessing it by placing the wall plate on a magnet or otherwise

Maintenance and cleaning

Each fan must be cleaned regularly and dismantled at least once a year to conduct an inspection of the motor and clean the fan from the build-up. Inspection shall include cleaning, external visual inspection of the engine, starting equipment and safety equipment.

1. Make sure that the unit is disconnected from the power supply before cleaning.
2. Clean plastic parts with a damp cloth or sponge with soap.
3. After the cleaning is completed, make sure that any soap residues have been removed and no liquids have entered the engine.
4. Make sure that all components are dry before reassembling the fan.

Notes

1. Observe all precautions necessary when connecting the device.
2. The device should be assembled and disassembled by a qualified electrician with SEP certification.
3. Before carrying out any adjustment or maintenance, always make sure that the unit is disconnected from the mains power supply, even if the fan is not running.
4. For electrical installation, a switch with a contact distance between all poles of not less than 3 mm is required.
5. Suitable measures shall be taken to avoid the flow of gases into the room from an open chimney flue or other open fire appliances
6. The manufacturer reserves the right to introduce innovations and changes resulting from technical progress.

Attention

It is prohibited to dispose of used equipment together with other waste. The crossed-out wheeled bin symbol indicates that electrical and electronic equipment, at the end of its service life, must not be disposed of together with other household waste. This symbol also means that products must be separately collected when disposed of. This device is made of materials and components that are suitable for reuse. The user is obliged to return used equipment to authorized electronic waste collection points. Operators of such collection points, including local collection centers, shops, and municipal units, form an appropriate system enabling the return of this equipment. Additional information about recycling the device can be obtained from the local city office, municipal waste management company, or the store where it was purchased. Proper disposal of used equipment helps prevent harmful effects on human health and the natural environment resulting from the possible presence of hazardous components. Households play an important role in contributing to reuse and recovery, including recycling, of used equipment; at this stage, attitudes are shaped that affect the preservation of the common good, which is a clean natural environment. Households are also among the largest users of small equipment, and rational management at this stage contributes to the recovery of secondary raw materials.



Warranty conditions

The guarantee is valid for a period of 2 years from the date of sale upon presentation of proof of purchase. Defects or technical defects or faults will be removed or replaced within 21 days after the defective device has been delivered to the service point. Warranty does not cover defects that are apparent at the time of purchase of the product, resulting from incorrect or improper use, storage, maintenance, and any mechanical damage.

Warranty number _____

Date of report	Date of repair	Scope of repair	Signature

Model _____ serial number _____ Date of sale _____ Receipt number _____ <div>sallers stamp</div>	Model _____ serial number _____ Date of sale _____ Receipt number _____ <div>sallers stamp</div>	Model _____ serial number _____ Date of sale _____ Receipt number _____ <div>sallers stamp</div>
Date _____ <div>Service stamp</div>	Date _____ <div>Service stamp</div>	Date _____ <div>Service stamp</div>

2 year guarantee



airRoxy sp. z o.o.
ul. Graniczna 40, 44 - 178 Przyszowice
tel.: +48 32 239 42 00
e-mail: office@airRoxy.com
www.airRoxy.com

